

Bellfair Walk Preserve



Raising the standard of new construction

Green Forest Construction is owned and operated by Jason Betsill. Jason was raised in Fayette County and currently resides in Brooks. Green Forest Construction's offices are also located in Brooks, GA.

The Betsill family has been constructing homes in Fayette County since the late 1800's!

Sales & Marketing By:
Robin Hullemeier
Bush Real Estate
Direct Line : 770-318-7313

All information is believed accurate but not warranted. Prices and floor plans are subject to changes, errors and omissions without notice. All images are copyrighted by original designer.



BELFAIR WALK PRESERVE

EXHIBIT "C"

Standard Features

INTERIOR

- 9' smooth ceilings on main floor
- Unique interior doors
- Wrought iron pickets on staircase
- Coffered ceiling in dining
- Craftsman style trim in dining
- Wood floors in kitchen, breakfast, dining, family, foyer and applicable hallways with full stain staircase treads.
- Tile flooring in all full baths and laundry
- Granite countertops in all baths, laundry & kitchen
- 42" wood burning fireplace with stone surround & site built mantle
- Large walk in closets (per plan)
- Wood shelving in master bedroom
- Wood shelving in kitchen pantry.
- Designer oil rubbed bronze lighting & plumbing fixtures / lighting is selectable by purchaser
- Elongated commodes
- All bedrooms, rear covered porch & family room prewired for fan with light kits
- Cable outlets in all bedrooms & family room
- Fully wired for security system / ready for activation upon close
- garage door with opener & 2 remotes
- Laundry rooms with base cabinet & laundry sink with granite top, under mount stainless sink & high arc oil rubbed bronze faucet
- Secondary main bath on main level (per plan) with raised vanity, granite top, under mount sink & 8" spread oil rubbed bronze fixture
- Protective ground fault interrupt circuits for wet areas
- 42" wall cabinets in kitchen

KITCHEN

- Stainless steel under mount sink
- High arc faucet with integrated sprayer
- Stainless steel whirlpool appliances with built in ovens & 36" cooktop, wood vent hood & dishwasher (selectable with allowance)
- Raised panel cabinets with hardware
- Crown moulding above cabinets
- Granite countertops
- Decorative tile backsplash
- Wood flooring
- Refrigerator ice maker line
- Chef's pantry with wood shelving suite

MASTER SUITE

- His/her raised vanities with granite tops & 8" oil rubbed bronze faucet spreads (per plan)
- Tile flooring
- Large walk in full tile showers with soap/shampoo inset and decorative trim
- Free standing contemporary soaking tub with wall mount faucet!
- Large carpeted walk in closets
- Trey ceilings (per plan)
- Sitting rooms (per plan)

EXTERIOR

- Fiber Cement siding
- Brick/stone accents with craftsman front
- Divided light window grids for all windows
- Architectural 30 year roof shingles
- Master planned landscape package including 30 pallets
- Large covered rear patios with grilling porches (per plan)
- Lifetime vinyl soffits
- Shutters (per plan)
- Prefinished gutters with splash blocks
- Front and rear electrical outlets and water faucets

ENERGY FEATURES

- NATURAL GAS! Tankless high efficiency water heater, gas furnaces, gas cooktop connection.
- Extreme gap sealing procedures
- Energy efficient right sized heating & air systems
- Insulated low-e windows & doors
- Moisture barrier home wrap

COMMUNITY EXCLUSIVE FEATURES

- Underground utilities
- Septic tank wastewater disposal
- Decorative mailbox & post
- Builder reserves the right to change and modify these standard features without notice. When used as Exhibit "C" of a new purchase and sale agreement, features on this sheet will not change.
- Lighting allowance : \$3,000.00

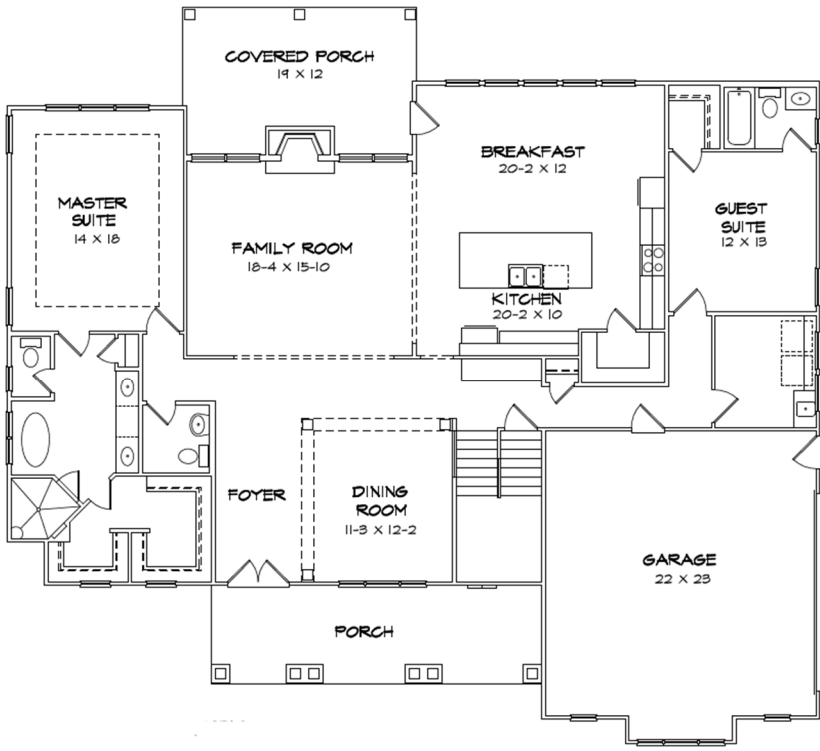
www.greenconstructionllc.com



Bellfair Walk Preserve

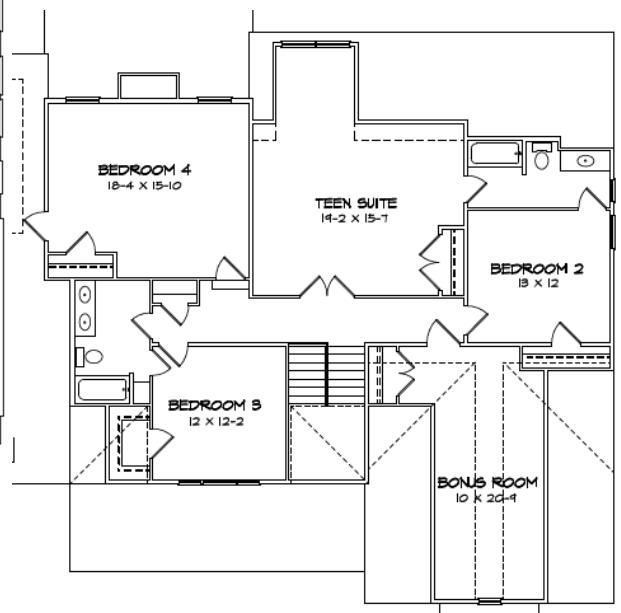
Green Forest Construction
www.greenconstructionllc.com

Exhibit "B"



Fieldstone Plan

1 ST Level	2290
2 ND Level	1633
TOTAL	3923



Sales & Marketing By:
Robin Hullemeier
Bush Real Estate
Direct Line : 770-318-7313

All information is believed accurate but not warranted.

Prices, floor plans, and features are subject to changes, errors and omissions without notice. All images are copyrighted by original designer.



Bellfair Walk Preserve

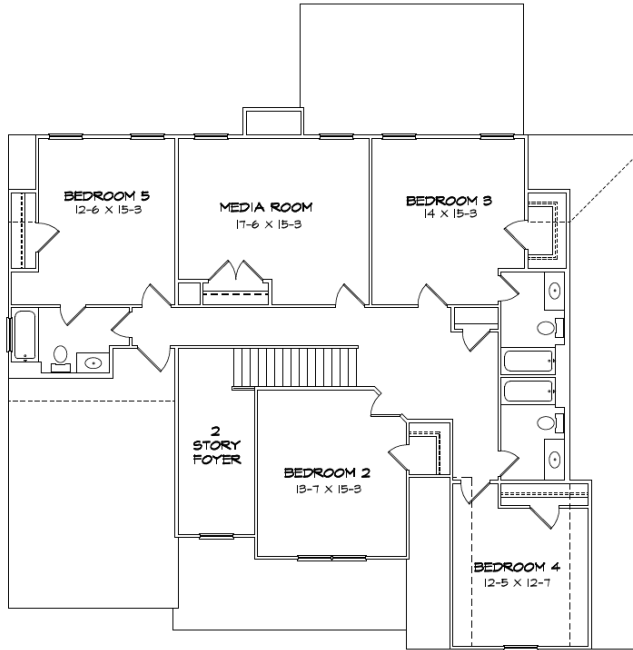
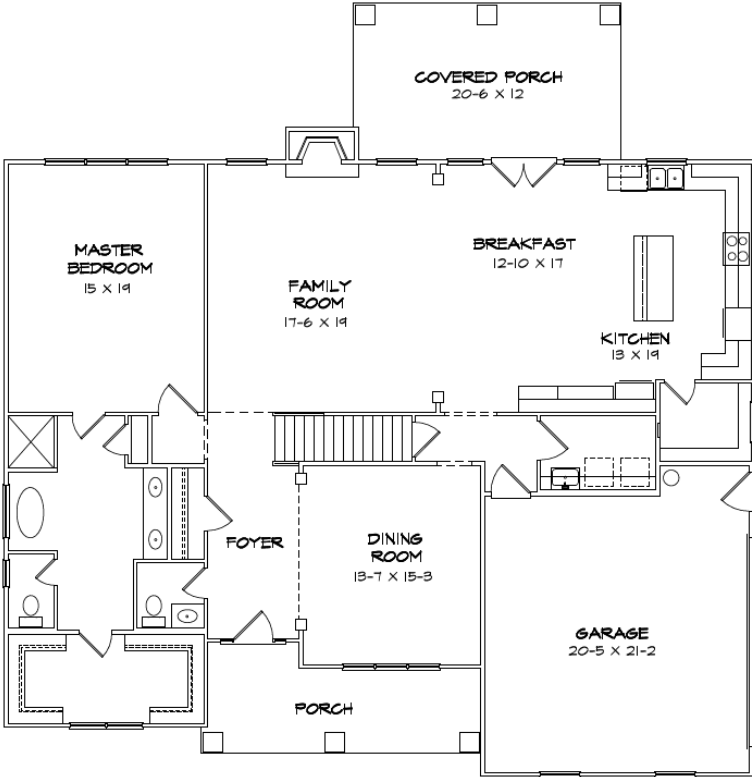
Green Forest Construction
www.greenconstructionllc.com

Exhibit "B"



Lexington Plan

1 ST Level	2017
2 ND Level	1623
TOTAL	3640



Sales & Marketing By:
Robin Hullemeier
Bush Real Estate
Direct Line : 770-318-7313

All information is believed accurate but not warranted.

Prices, floor plans, and features are subject to changes, errors and omissions without notice. All images are copyrighted by original designer.



Bellfair Walk Preserve

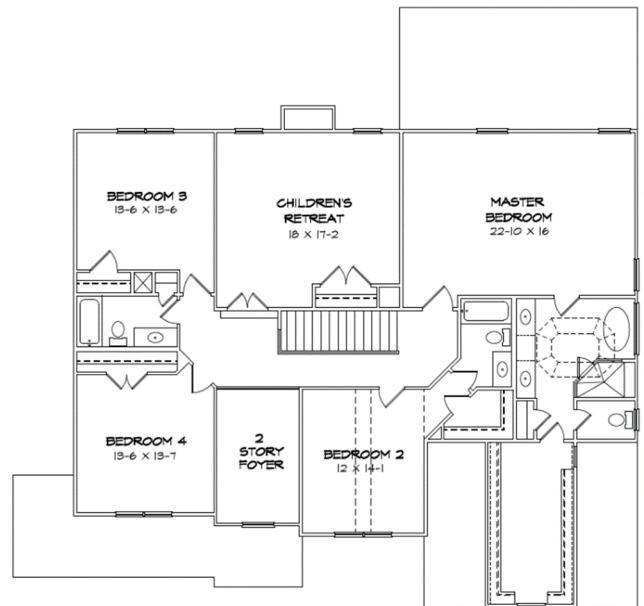
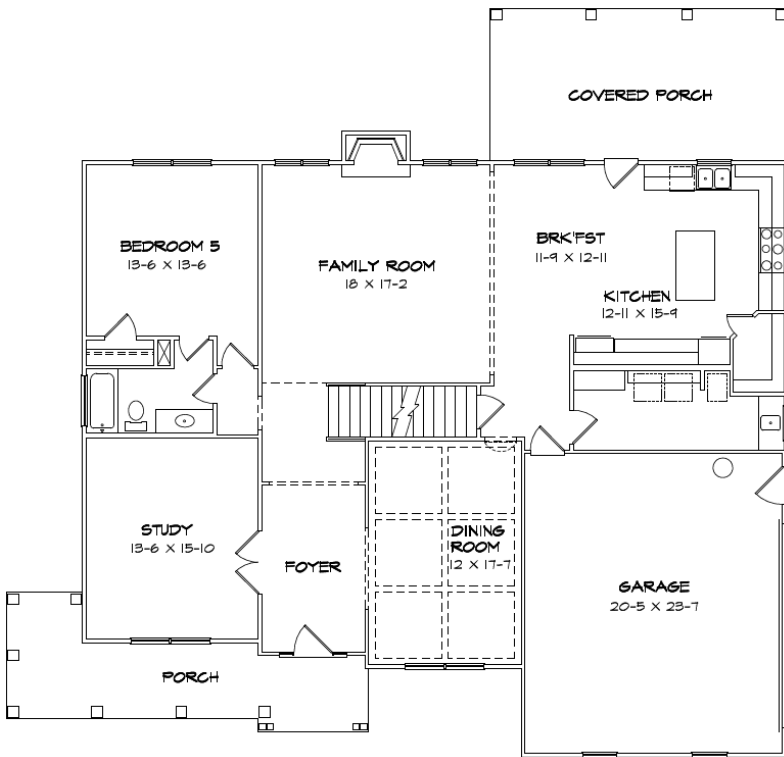
Green Forest Construction
www.greenconstructionllc.com

Exhibit "B"



Sharpsburg Plan

1 ST Level	1847
2 ND Level	1983
TOTAL	3830



Sales & Marketing By:
Robin Hullemeyer
Bush Real Estate
Direct Line : 770-318-7313

All information is believed accurate but not warranted.

Prices, floor plans, and features are subject to changes, errors and omissions without notice. All images are copyrighted by original designer.



FINAL PLAT SURVEYOR'S CERTIFICATE

I HEREBY CERTIFY THAT THE ACCURACY OF THIS SURVEYING WAS ACCURATE AND CORRECT... I, [Signature], Registered Professional Surveyor No. [Number], State of Georgia.

DATE: 11/26/12
APPROVED BY THE FINETTE COUNTY PLANNING COMMISSION... [Signature]

DATE: 11/26/12
APPROVED BY THE FINETTE COUNTY PLANNING COMMISSION... [Signature]

DATE: 11/26/12
APPROVED BY THE FINETTE COUNTY PLANNING COMMISSION... [Signature]

DATE: 11/26/12
APPROVED BY THE FINETTE COUNTY PLANNING COMMISSION... [Signature]

DATE: 11/26/12
APPROVED BY THE FINETTE COUNTY PLANNING COMMISSION... [Signature]

DATE: 11/26/12
APPROVED BY THE FINETTE COUNTY PLANNING COMMISSION... [Signature]

DATE: 11/26/12
APPROVED BY THE FINETTE COUNTY PLANNING COMMISSION... [Signature]

DATE: 11/26/12
APPROVED BY THE FINETTE COUNTY PLANNING COMMISSION... [Signature]

DATE: 11/26/12
APPROVED BY THE FINETTE COUNTY PLANNING COMMISSION... [Signature]

DATE: 11/26/12
APPROVED BY THE FINETTE COUNTY PLANNING COMMISSION... [Signature]

DATE: 11/26/12
APPROVED BY THE FINETTE COUNTY PLANNING COMMISSION... [Signature]

DATE: 11/26/12
APPROVED BY THE FINETTE COUNTY PLANNING COMMISSION... [Signature]

DATE: 11/26/12
APPROVED BY THE FINETTE COUNTY PLANNING COMMISSION... [Signature]

DATE: 11/26/12
APPROVED BY THE FINETTE COUNTY PLANNING COMMISSION... [Signature]

DATE: 11/26/12
APPROVED BY THE FINETTE COUNTY PLANNING COMMISSION... [Signature]

GENERAL NOTES

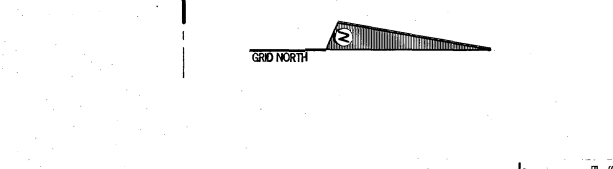
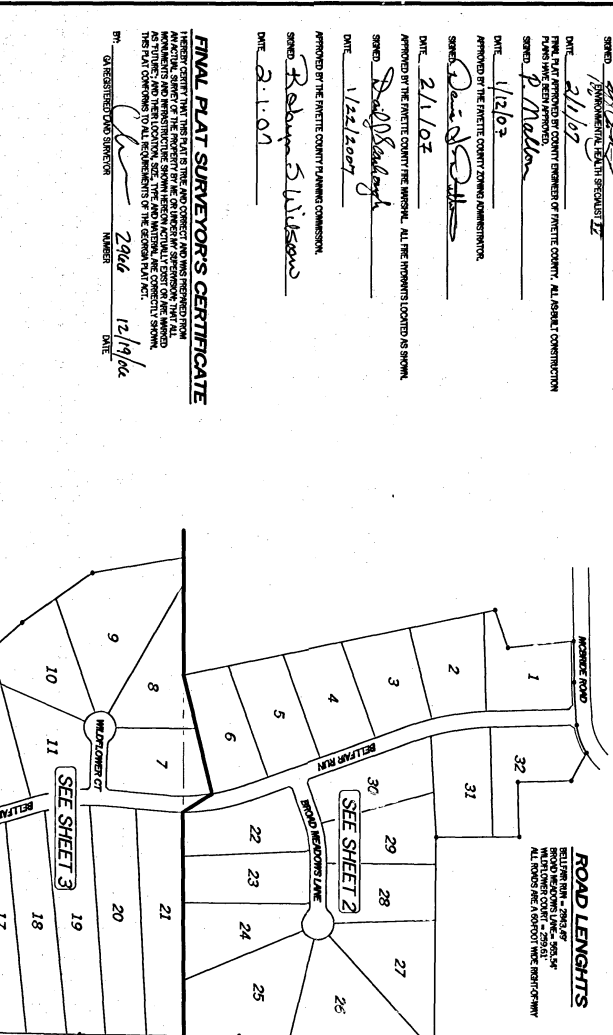
- THIS SURVEY WAS CONDUCTED IN ACCORDANCE WITH THE SURVEYING ACT OF 1985... THE SURVEY WAS CONDUCTED BY THE FINETTE COUNTY PLANNING COMMISSION...

LEGEND

- FOR POINT OF BEGINNING... FOR POINT OF END... FOR POINT OF BEGINNING... FOR POINT OF END...

PROPERTY DATA: LINE-CURVE TABLE. Table with columns: LINE, ARC, CHD. BRG., RADUS, CHD., DELTA, TAN.

CL DATA: LINE-CURVE TABLE. Table with columns: LINE, ARC, CHD. BRG., RADUS, CHD., DELTA, TAN.



PROPERTY DATA: LINE-CURVE TABLE. Table with columns: LINE, ARC, CHD. BRG., RADUS, CHD., DELTA, TAN.

PROPERTY DATA: LINE-CURVE TABLE. Table with columns: LINE, ARC, CHD. BRG., RADUS, CHD., DELTA, TAN.

Final Plat Prepared by: Point to Point Land Surveyors. 810 Jackson Street, Locust Grove, Georgia 30243.

Release Description Table with columns: DATE, RELEASE DESCRIPTION.

